



## FALKLAND ISLANDS

---

### **Stanley Common (Restricted Driving on Beaches) Regulations 2020**

**(No. 18 OF 2020)**

#### ARRANGEMENT OF PROVISIONS

##### Regulation

1. Title
2. Commencement
3. Interpretation
4. Restricted driving on beaches
5. Development incidental to driving restrictions
6. Revocation of Prohibition of Vehicles on Beaches Order 1991

Schedule – Designated Beaches



## FALKLAND ISLANDS

---

### Stanley Common (Restricted Driving on Beaches) Regulations 2020

*(made: 11 November 2020)*

*(commencement: see regulation 2)*

*(published: 11 November 2020)*

I make these regulations under section 10(a) of the Stanley Common Ordinance 1999 and section 59 of the Road Traffic Ordinance 1948 on the advice of Executive Council.

#### 1. Title

These Regulations are the Stanley Common (Restricted Driving on Beaches) Regulations 2020.

#### 2. Commencement

These Regulations come into force on publication in the *Gazette* of the notification of the Legislative Assembly approval of them.

#### 3. Interpretation

For the purposes of these Regulations —

“**designated beach**” means a beach designated as such in accordance with the Schedule;

“**electrically assisted pedal cycle**”...

*[Sch. Ord. 18/2022/w.e.f. 09/11/2022]*

“**mobility scooter**”...

*[Sch. Ord. 18/2022/w.e.f. 09/11/2022]*

“**motor vehicle**” has the same meaning as in the Road Traffic Ordinance 1948.

*[Sch. Ord. 18/2022/w.e.f. 09/11/2022]*

#### 4. Restricted driving on beaches

(1) A person must not drive a motor vehicle on a designated beach.

- (2) Subregulation (1) is subject to subregulation (3).
- (3) A person may drive a motor vehicle on a designated beach if —
- (a) ...
  - (b) it is necessary to do so in order to provide emergency assistance;
  - (c) it is necessary to do so in order to carry out works by or on behalf of the Government for the management of Stanley Common; or
  - (d) use of the vehicle is authorised by the Governor by notice published in the *Gazette*.

[Sch. Ord. 18/2022/w.e.f. 09/11/2022]

- (4) A person driving a motor vehicle on a beach in accordance with subregulation (3) must take reasonable care to avoid —
- (a) disturbing wildlife; and
  - (b) causing damage to —
    - (i) vegetation; and
    - (ii) wildlife habitat.
- (5) It is an offence to contravene subregulation (1) or (4).
- (6) A person convicted of an offence under subregulation (5) is liable to a fine not exceeding level 3 on the standard scale.

## **5. Development incidental to driving restrictions**

- (1) Development which is incidental to the driving restrictions imposed by these Regulations is authorised, in particular —
- (a) the erection and maintenance of signs; and
  - (b) the erection and maintenance of fencing.
- (2) Fencing erected in accordance with subregulation (1) must be erected only if necessary to supplement the use of signs, and must be erected in a manner which minimises interference with public access to a designated beach.

## **6. Revocation of Prohibition of Vehicles on Beaches Order 1991**

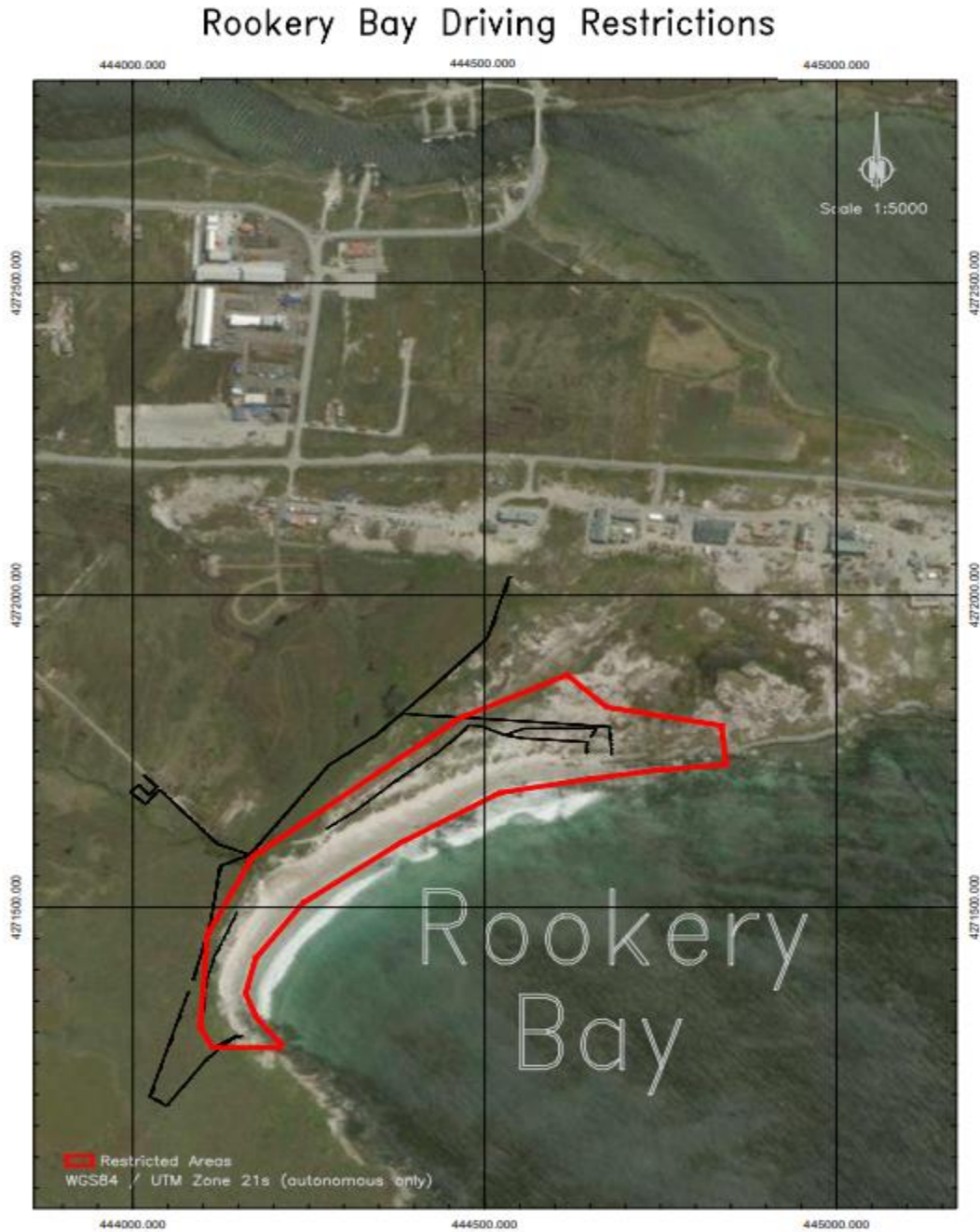
The Prohibition of Vehicles on Beaches Order 1991 (S.R. & O. No 25 of 1991) is revoked.

## SCHEDULE – DESIGNATED BEACHES

*regulation 2*

The areas identified on the maps in this Schedule are designated as beaches for the purposes of these Regulations —

### 1. Rookery Bay



## 2. Surf Bay

### Surf Bay Driving Restrictions



### 3. Yorke Bay

## Yorke Bay Driving Restrictions

